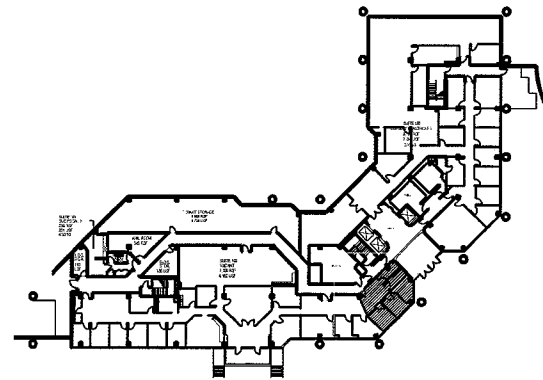


SUITE 105
694 RSF



KEY PLAN

RELEASES / DATES

PROJECT TITLE
SouthBridge
First Floor

DATE 09/30/08
DRAWN LF
CHECKED
APPROVED

NOT FOR CONSTRUCTION
RELEASED FOR CONSTRUCTION

PROJECT NUMBER
08704-00

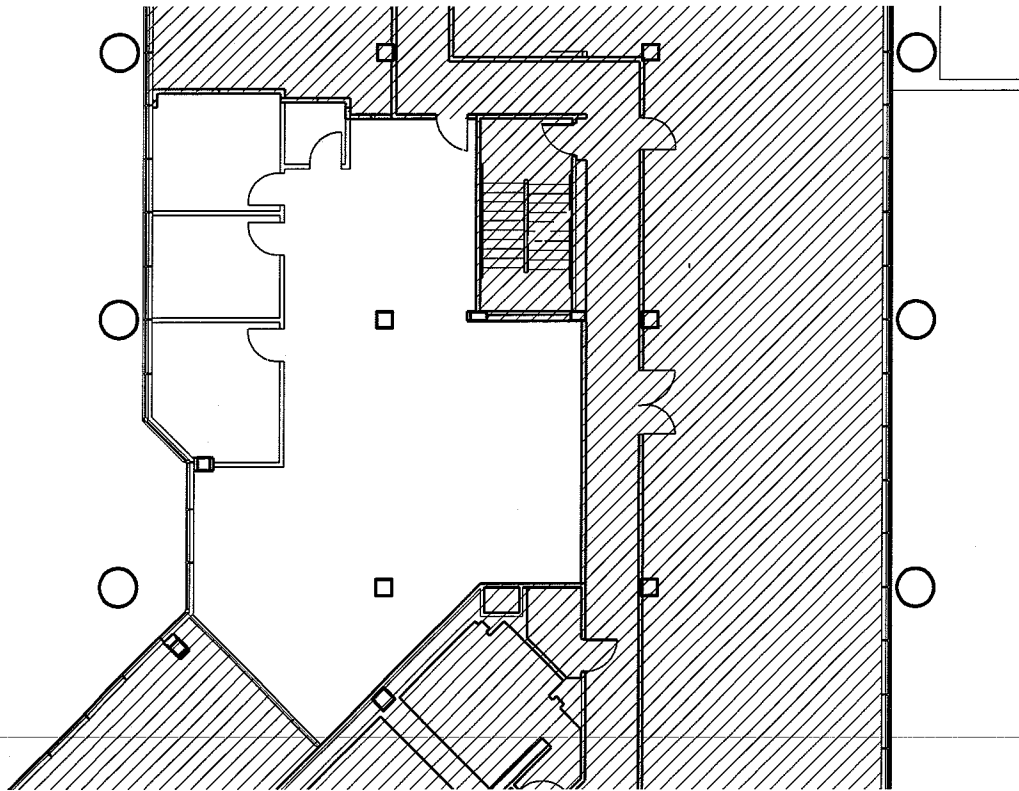
DB-PATH:
DB-FILE:

SHEET TITLE

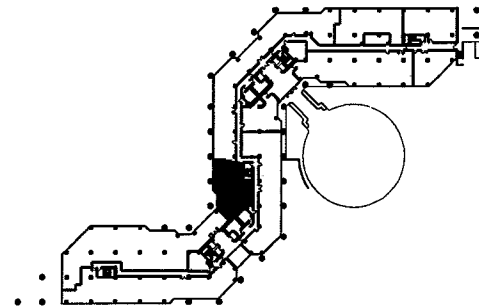
K P S Group, Inc
2101 First Ave North
Birmingham, AL 35203
Tel: (205) 251-0125
Fax: (205) 458-1513

K|P|S
G R O U P

DRAWING NUMBER



SUITE 220
2,081 RSF



KEY PLAN

RELEASES / DATES

PROJECT TITLE

SouthBridge
Second Floor

DATE 09/30/08

DRAWN LF

CHECKED

APPROVED

NOT FOR CONSTRUCTION

RELEASED FOR CONSTRUCTION

PROJECT NUMBER

08704-00

DB-PATH:

DB-FILE:

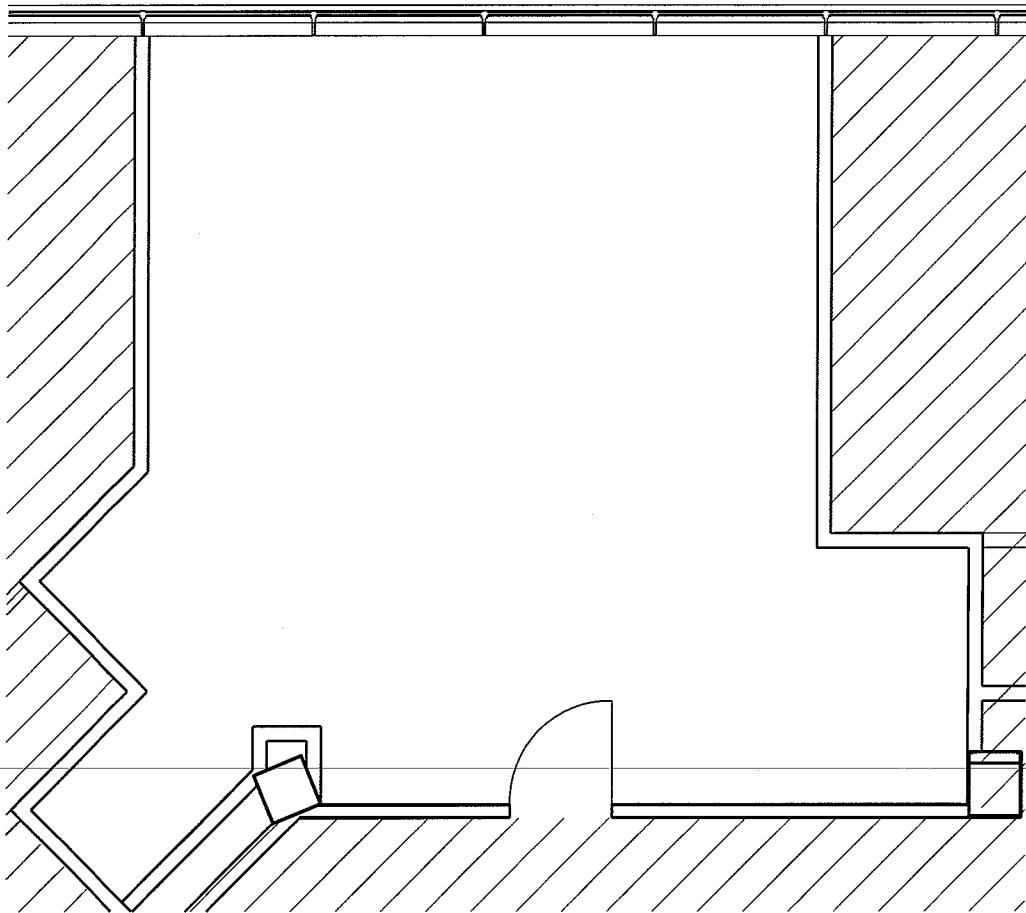
SHEET TITLE

K P S Group, Inc
2101 First Ave North
Birmingham, AL 35203
Tel: (205) 251-0125
Fax: (205) 458-1513

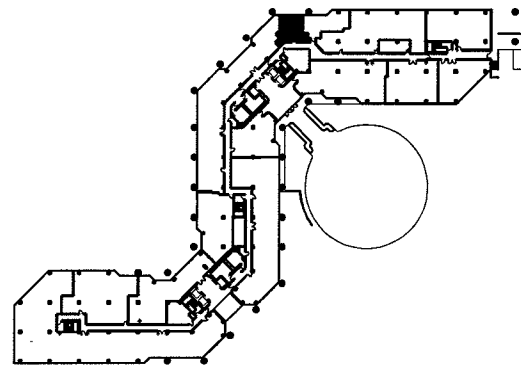
K|P|S
G R O U P

DRAWING NUMBER

A-1



SUITE 279
605 RSF



KEY PLAN

RELEASES / DATES

PROJECT TITLE

SouthBridge
Second Floor

DATE 09/30/08

DRAWN LF

CHECKED

APPROVED

NOT FOR CONSTRUCTION
RELEASED FOR CONSTRUCTION

PROJECT NUMBER
08704-00

DB-PATH:

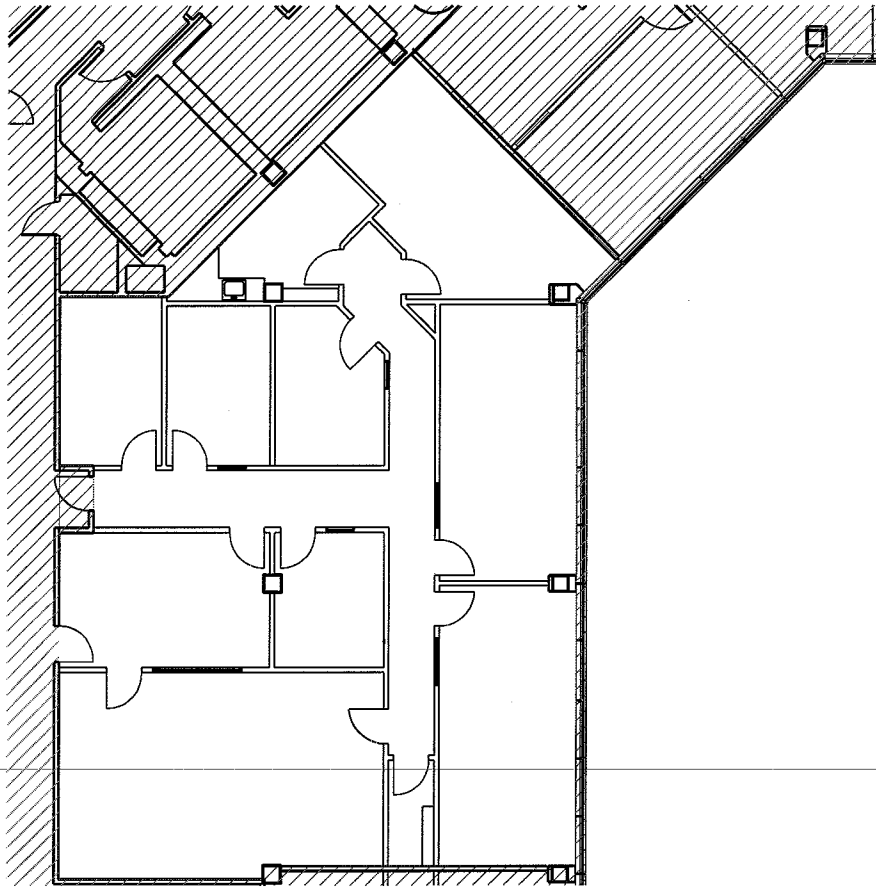
DB-FILE:

SHEET TITLE

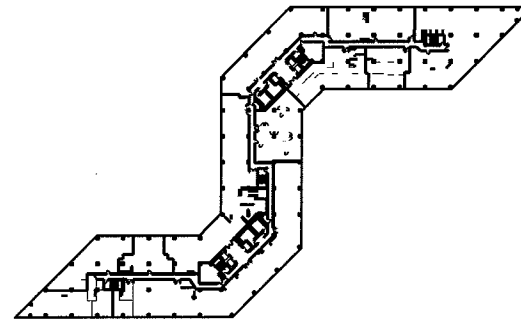
K P S Group Inc
2101 First Ave North
Birmingham, AL 35203
Tel: (205) 251-0125
Fax: (205) 458-1513

K|P|S
G R O U P

DRAWING NUMBER



SUITE 529
3,100 RSF



KEY PLAN

RELEASES / DATES

PROJECT TITLE

SouthBridge
Fifth Floor

DATE 09/29/08

DRAWN ER

CHECKED

APPROVED

NOT FOR CONSTRUCTION
RELEASED FOR CONSTRUCTION

PROJECT-NUMBER
08704-00

DB-PATH:

DB-FILE:

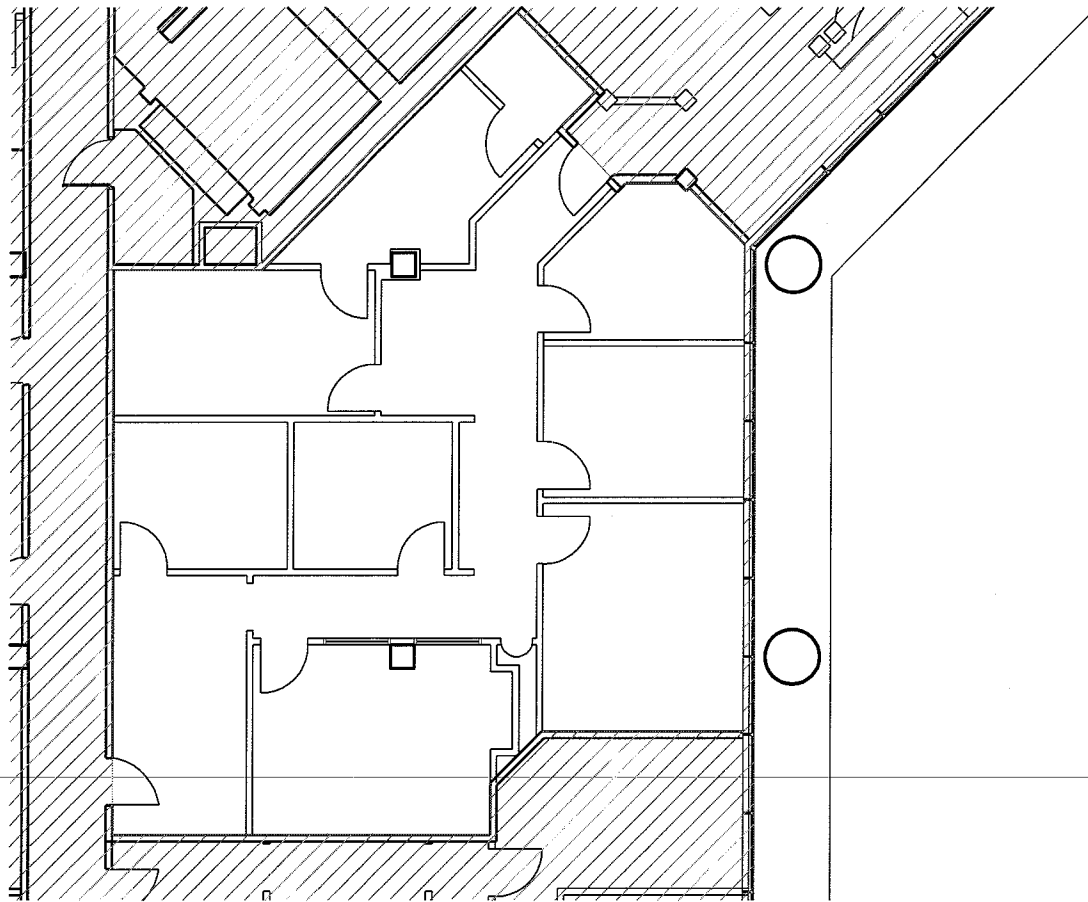
SHEET TITLE

K P S Group, Inc
2101 First Ave North
Birmingham, AL 35203
Tel: (205) 251-0125
Fax: (205) 458-1513

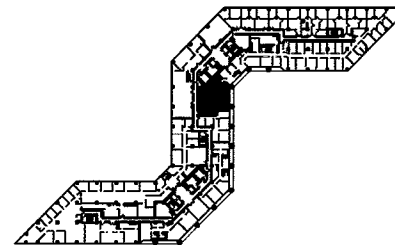
K|P|S
G R O U P

DRAWING NUMBER

A-1



SUITE 645
1,895 RSF



KEY PLAN

RELEASES / DATES

PROJECT TITLE
SouthBridge
Sixth Floor

DATE 09/29/08

DRAWN ER

CHECKED

APPROVED

NOT FOR CONSTRUCTION
RELEASED FOR CONSTRUCTION

PROJECT NUMBER
08704-00

DB-PATH:

DB-FILE:

SHEET TITLE

K P S Group, Inc.
2101 First Ave. North
Birmingham, AL 35203
Tel: (205) 251-0125
Fax: (205) 458-1513

K|P|S
G R O U P

DRAWING NUMBER

A-1